

RealVision Customizable Manufacturing Solutions

## ProDocTivity DocManager™

### Easily control manufacturing documentation

RealVision™ ProDocTivity™ DocManager™ software is easy to use, and provides a valuable “green” documentation control and change management solution that simplifies how manufacturing, engineering, and QA track changes and collaborate on documentation and data types. Plans, CAD drawings, images, numerical control programs, BOMs, set-up sheets, operation instructions, notes, router information and more are integrated and easily accessible across departments simply by selecting and applying a trackable part number to your items.



Controlling manufacturing documentation and data types are critical steps to improving shop floor productivity and achieving excellent process quality. Managing documents by controlling revisions and access to hard copies is logistically difficult and prone to human error, sometimes resulting in manufacturing bottlenecks from inaccurate, outdated or misplaced documents.

Allowing multiple departments to use documents from a shared data source reduces process barriers created by uncontrolled paper, while

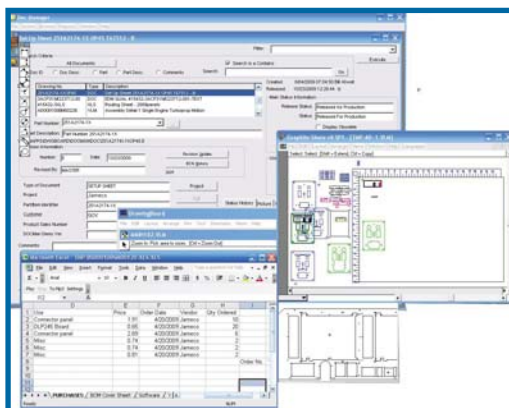


Figure 1. Share and visualize setup sheets, sketches, MS Excel spreadsheets, and other documents -- all linked by a single part number.

also providing the ability to log, track and approve document changes--thereby saving time, reducing scrap, and streamlining work processes.

### Easily manage multiple file and document types

RealVision DocManager simplifies access to files from different viewing sources, for example, CAM, CAD, DWG, DXF, TIF, CALS files and more. This is achieved by using RealVision three-letter file extensions, user defined, for logging documents in/out of the system. Additional capabilities include the initiation of an Engineering Change Notice (ECN) request from the viewing program, and the ability to associate marked up documents with ECNs.

RealVision DocManager's powerful viewer-to-file association supports virtually any viewer, allowing you to view a document or program with a different viewer than the editing program. For example you may want to view an MS Word document with a PDF program so DocManager manages the two documents as though they are one.

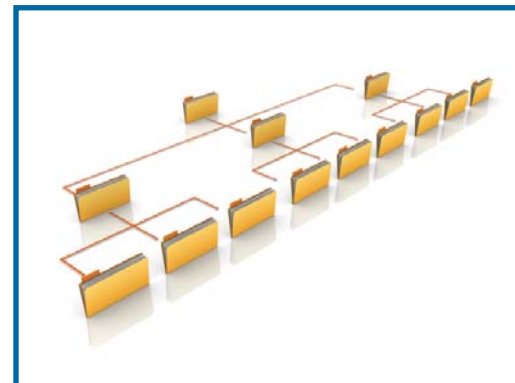


Figure 2. Simplifies access to all documents, organizing each one by a trackable part number. Documents are viewable in virtually any type of viewer.

### Amazingly affordable software customization

RealVision DocManager's powerful database and flexibility, combined with user customization and powerful document naming conventions, allow each department to control its own naming standards, storage locations, and system configuration information. With proper security rights, most DocManager software screens are user customizable. Your company can save time and thousands of dollars by not having to contact technical support to simply change a naming or numbering scheme (or field labels) to accommodate your manufacturing best practices.

## Manufacturing documentation control and change management system

### DocManager gives you:

- Complete control of company-wide manufacturing documentation and data types
- Affordable user-customization to suit manufacturing best practices
- Powerfully integrated revision control and dynamic MBOM

### Free Demo:

Call 1-800-487-1031 now to see how RealVision solutions can revolutionize your shop floor environment.

## RealVision™ ProDocTivity™ Solutions

- Integrator™
- DocManager™
- WebDNC™ (ToolSet™)
- ToolManager™
- RealVision Preventative Maintenance™ (RPM)
- ProDocTivity Suite



The Shop Floor Productivity Experts

## System Specifications:

- 500 MHz or higher
- 256 MB RAM or higher
- CD-Rom or DVD drive
- 1024 x 768 or higher resolution monitor

## Network:

- Compatible with most network operating systems
- Minimum 4 MB disk space required

## Operating Systems

- Windows Vista, Windows 7, XP Pro, XP, 2003, 2000, NT 4.00, 3.51, 3.11, 95, 98, 98SE, Terminal Server, Citrix

## Database

- Oracle
- MS SQL
- MS FoxPro



## RealVision, Inc.

Eagle, Idaho  
 Toll Free: 1-800-487-1031  
 Sales: 1-800-487-1031, x254  
 Tech: 1-208-939-2428, x201  
 Fax: 208-939-2733  
[www.RealVisionMfgSolutions.com](http://www.RealVisionMfgSolutions.com)



The Shop Floor Productivity Experts

Different departments, divisions, suppliers, etc., often require their own nomenclature and numbering conventions. Manufacturing environments usually have multiple naming schemes to identify machines, processes, parts, suppliers, and more. RealVision DocManager contains a document naming assistant to ensure users follow specific naming conventions when entering documents. Departments can set up unique numbering systems for documents of varying formats. This feature is configurable to reflect virtually any numbering system.

## Powerful engineering change tracking with complete end-to-end document control

With RealVision DocManager, access to manufacturing and engineering documentation from anywhere in the network is quick and easy. The software creates logical relationships between documents and part numbers, maintains secure access controls to accommodate approval, version control, engineering holds, etc., and stores the documents in a secure repository. DocManager simplifies status monitoring and improves workflow with user-defined warnings for specific operations and part numbers. No matter the department, RV DocManager tracks engineering changes and manages the approval process through the software's pre-and-post notification capability by linking the ECN transaction file to email, MRP, ERP, and more.

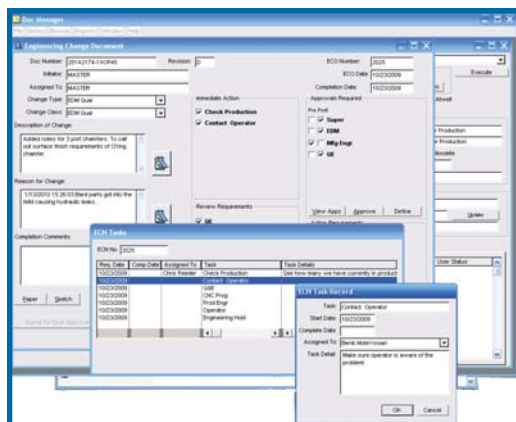


Figure 3. Extensive engineering change notification, tracking and auditing.

The software tracks printed documents by assigning a control number with an effectivity date indicating the document is void if not returned by the assigned date. With multiple ways of document tracking by work order, user, department, location and more, RV DocManager

manages workflow across departments and achieves easy and complete product data management. RealVision DocManager is scalable to fit the needs of small to large manufacturing operations.

## Built-in MBOM Manager

Creating a manufacturing bill of materials (MBOM) can be a time-consuming and complex process. However, with RealVision DocManager, creating an MBOM from existing documentation, no matter which department originates the document, has never been easier. BOM and part information are pulled directly from your ERP or other manufacturing application via the RealVision ODBC Connect™ framework. RealVision ODBC Connect, available in several database formats, simplifies integration with legacy and disparate IT systems and databases. With access to the engineering BOM and job scheduler, RealVision DocManager automatically generates an MBOM which relates information stored in various documents from multiple departments to each production operation.

When you combine the MBOM with RealVision DocManager's powerful document organization, you have a complete configuration and MBOM prototyping management system for testing and cost analysis. With easily retrievable BOM, production specifications, ECN, and process information, along with accurate revision control of all document types, RV DocManager provides the vital links between departments and locations to achieve manufacturing best practices.

## Why RealVision

With 25 years of experience, RealVision Manufacturing Solutions' unparalleled knowledge of manufacturing and shop floor operations is built into each of its products. Built by engineers and for engineers, these practical and customizable solutions easily adapt to any manufacturing environment to provide all the efficiency and flexibility you need to manage your production systems flawlessly and build productivity, reduce scrap, save time, and lower costs. Contact RealVision today at 1-800-487-1031 to request a free demo—the best way to visualize how RealVision can improve your tool and shop floor productivity and boost your bottom line.

## RealVision DocManager solutions

Manufacturing / Shop Floor Needs	RealVision DocManager Solution Highlights	Results / Benefits
<ul style="list-style-type: none"> <li>Comply with strict process and recordkeeping requirements to meet customer demands</li> </ul>	<ul style="list-style-type: none"> <li>One solution to create, distribute, archive and manage data types and documentation across departments</li> <li>Beginning-to-end document and change traceability, including prototype tracking capability</li> </ul>	<ul style="list-style-type: none"> <li>Affordable, easy and quick to implement</li> <li>Maintain accurate process and revision control records for ISO 9000 certification and other entities, including government FDA and FAA that require stringent recordkeeping</li> </ul>
<ul style="list-style-type: none"> <li>Ability to customize software to suit manufacturing needs</li> </ul>	<ul style="list-style-type: none"> <li>Flexibility to change numbering, labels, status setting, fields, document types, alerts, ECN nomenclature and more</li> </ul>	<ul style="list-style-type: none"> <li>Simplifies training</li> <li>Easily configurable to suit your business best practices</li> <li>Scalable from standalone to enterprise configurations</li> </ul>
<ul style="list-style-type: none"> <li>Easy searching and sorting of documentation</li> </ul>	<ul style="list-style-type: none"> <li>Powerful search capability using simple searches, Boolean type searches and filters</li> <li>Create filters for repeatable custom searches</li> </ul>	<ul style="list-style-type: none"> <li>Quickly find what you need and retrieve exactly what you want to review</li> <li>Allows virtually any viewer to be associated with a file type</li> <li>Saves time!</li> </ul>
<ul style="list-style-type: none"> <li>Support for non-Windows file types</li> </ul>	<ul style="list-style-type: none"> <li>RealVision's unique external file Extension feature simplifies access to non-Windows files types</li> </ul>	<ul style="list-style-type: none"> <li>Share files with Windows and non-Windows systems</li> <li>Simplifies compatibility</li> </ul>
<ul style="list-style-type: none"> <li>Integrate manufacturing and engineering information with other sources including ERP, CNC/DNC, and MES</li> </ul>	<ul style="list-style-type: none"> <li>Easily share documentation with multiple departments, the shop floor, IT systems (ERP), other RealVision software, and more</li> <li>Consider using RealVision software: RV WebDNC™, RV Integrator™, RV RPM™</li> <li>RealVision ODBC Connect™ framework simplifies integration with third-party databases</li> </ul>	<ul style="list-style-type: none"> <li>Safely store and archive multiple data types and documentation</li> <li>Extract information from MRP and ERP on Unix or Windows</li> <li>Expandable solutions for DNC, MES and maintenance</li> <li>Support for Oracle, MS SQL and MS FoxPro</li> </ul>

### Customer Industries:

- Aerospace and Defense
- Assembly Services
- Equipment Maintenance
- Fabrication
- Industrial Equipment
- Industrial Machining
- Medical Instruments
- Reactor Systems
- Tool and Die
- Transportation
- And more....



### RealVision, Inc.

Eagle, Idaho  
 Toll Free: 1-800-487-1031  
 Sales: 1-800-487-1031, x254  
 Tech: 1-208-939-2428, x201  
 Fax: 208-939-2733  
[www.RealVisionMfgSolutions.com](http://www.RealVisionMfgSolutions.com)



The Shop Floor Productivity Experts

RealVision Customizable Manufacturing Solutions

## The RealVision Difference

### Services

RealVision's hands-on manufacturing and operations experience uniquely qualifies us to meet our customers' demands in their complex shop floor environments. RealVision ProDocTivity solutions provide you with best-in-class paperless shop floor solutions, as well as a partner who backs you with quality services when needed. Our range of services support RealVision solutions, from your password-protected online access to Web self-serve support, to one-on-one technical support from our staff. We also specialize in software customization for specific customer needs and training to best meet your business demands.

### Solutions

RealVision has been providing manufacturing and management software solutions for industry since 1986. Scalable to meet your highest demand, our customer testimonials demonstrate our proven leadership in shop floor operations management. **The full RealVision portfolio of ProDocTivity solutions includes:**

#### RealVision Integrator

RV Integrator is a paperless "green" Manufacturing Execution System (MES). With a powerful database, the RealVision Connect ODBC framework allows application connectivity to link your existing routing, BOM, and MRP info with blueprints, work instructions, and process documentation. Integrator supports ODBC connectivity with Oracle and Microsoft SQL data tables to create client-server environment. Integrator also includes work instruction authoring tools, "smart forms," photo library, tool list authoring, and third party file management.

#### RealVision DocManager

RV DocManager is a paperless shop floor documentation and change management system that manages manufacturing documents -- CAD files, sketches, scanned images, and more. DocManager simplifies compliance with ISO 9000 requirements, handles the logistics of document distribution and viewing, and ENC tracking.

#### RealVision ToolManager

RealVision ToolManager manages tool purchasing, calibration, tracking, location and life cycle for multiple tool cribs, as well as project and task status, reporting, and much more. Includes RealVision ODBC Connect Framework networked solution. Allows authorized personnel to monitor the entire workflow, including tracking tool availability. Scales to manage requirements today and tomorrow.

#### WebDNC (and ToolSet)

RealVision WebDNC is the most advanced and powerful DNC communication system available today. Includes all the features of a standard high end DNC system plus program revision control, tool list management, part and job databases, integrated machine tool monitoring, NC programming, data collection, tool life integration, and document and drawing linking, Integrates with RealVision ToolSet.

#### RealVision Preventative Maintenance (RPM)

RPM schedules maintenance and tracks all related costs as well as the service part inventory to keep your equipment running. Powerful purchasing functions make it easy to control inventory and ability to order outside maintenance services. The work order system not only facilitates the collection of scheduled maintenance information labor and materials, but also handles all unplanned and emergency service.

#### Productivity Suite

Combine any or all of the above standalone solutions (except RPM) to build a custom, integrated solution that gives you complete control of your shop floor environment that far exceeds competitive offerings.

### RealVision™ ProDocTivity™ Solutions

- Integrator™
- DocManager™
- WebDNC™ (ToolSet™)
- ToolManager™
- RealVision Preventative Maintenance™ (RPM)
- ProDocTivity Suite

### Free Demo:

Call 1-800-487-1031 now for your free demo—the best way to see how RealVision solutions can revolutionize your shop floor environment.



### RealVision, Inc.

Eagle, Idaho  
Sales: 800-487-1031  
Tech: 208-939-2428, ext 201  
Toll Free: 1-800-487-1031  
Fax: 208-939-2733  
www.RealVisionMfgSolutions.com



The Shop Floor Productivity Experts